



Press release  
Paris June 1, 2022

## Two new Orange data centers supporting growth of usages and controlling energy impact

By commissioning two new data centers, in Amilly in the Centre-Val de Loire region and in Val-de-Reuil in Normandy, where the first data center has been in operation since 2012, Orange is placing the energy efficiency of its infrastructures at the heart of its Net Zero Carbon goal by 2040. The two identical buildings will cover 16,000 sq. m., including 5,000 sq. m. of computer rooms.

The three highly secured data centers will host Orange business and residential customer data and services, as well as our own in-house information system.

For more than 10 months a year they operate without the use of air conditioning by using a free cooling system. The outside air and the design of the buildings provide natural cooling for IT equipment, thereby reducing their energy impact by 30% compared to older generation of Orange data centers.

The PPAs<sup>1</sup> that Orange has entered into with Boralex, Engie and TotalEnergies cover the consumption of the three data centers with electricity from renewable sources.

With a Power Usage Effectiveness <sup>2</sup>estimated at 1.3, these data centers rank among the most efficient in France.

Fabienne Dulac, Deputy CEO of Orange Group and CEO of Orange France :

*"These new data centers are truly strategic assets for the Group. Designed to support the growth of our internal needs and that of our customers, they will also help to significantly reduce energy consumption and environmental impact while operating within a framework of trust. These data centers mark a significant milestone in the consolidation of our data center footprint: by 2030 our 17 historic data centers will have closed and all our hosting activities will be concentrated on these three new facilities".*

---

<sup>1</sup> PPA: (Renewable) Power Purchase Agreements

<sup>2</sup> PUE : Power Usage Effectiveness is a metric used to determine the energy efficiency of a data center. PUE is determined by dividing the total amount of power entering a data center by the power used to run the IT equipment within it.

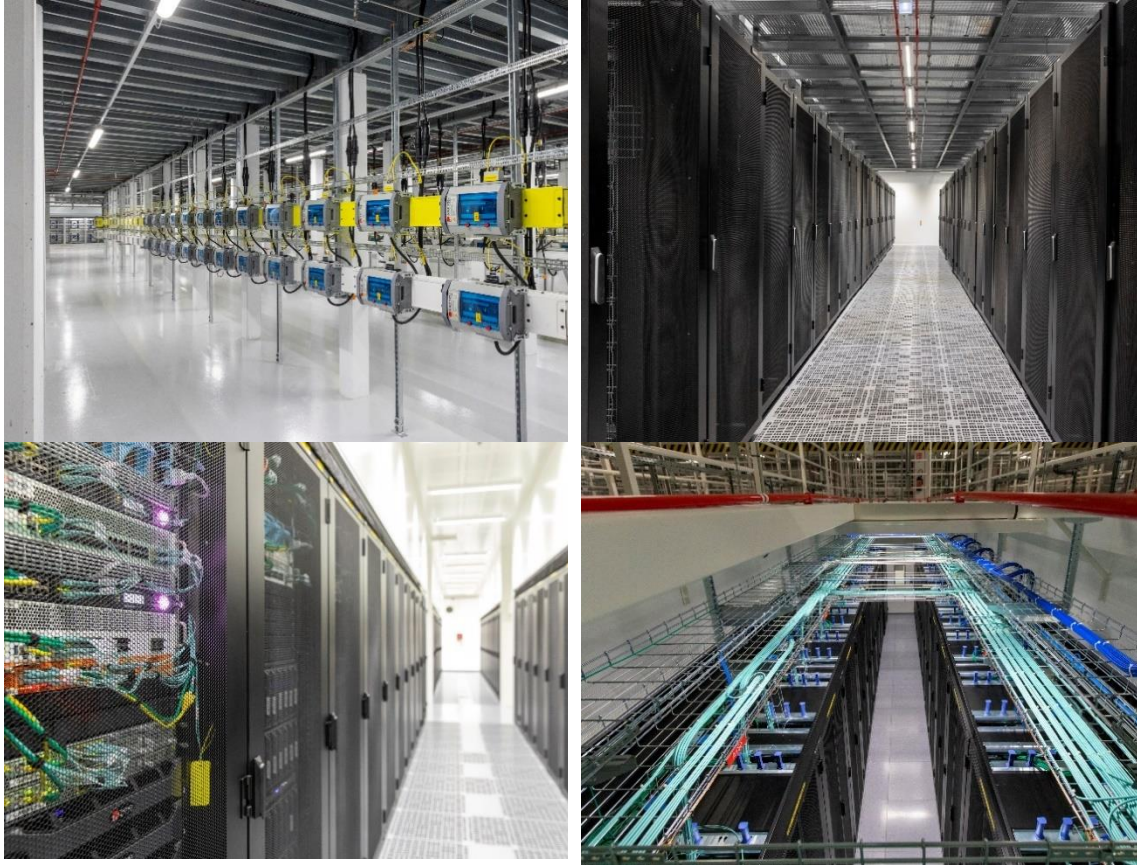


Photo credit: Daisy Reillet

[Click here](#) to download pictures.

#### About Orange

Orange is one of the world's leading telecommunications operators with sales of 42.5 billion euros in 2021 and 137,000 employees worldwide as at March 31, 2022, including 76,000 employees in France. The Group had a total customer base of 278 million customers worldwide as at Thursday, March 31, 2022, including 232 million mobile customers and 24 million fixed broadband customers. The Group is present in 26 countries. Orange is also a leading provider of global IT and telecommunication services to multinational companies, under the brand Orange Business Services. In December 2019, the Group presented its new 'Engage 2025' strategic plan, which, guided by social and environmental accountability, aims to reinvent its operator model. While accelerating in growth areas and placing data and AI at the heart of its innovation model, the Group aims to be an attractive and responsible employer, adapted to emerging professions.

Orange is listed on the NYSE Euronext Paris (symbol ORA) and on the New York Stock Exchange (symbol ORAN). For more information on the internet and on your mobile: [www.orange.com](http://www.orange.com), [www.orange-business.com](http://www.orange-business.com), or follow us on Twitter: [@orangegrouppr](https://twitter.com/orangegrouppr).

*Orange and any other Orange product or service names included in this material are registered trademarks belonging to Orange or Orange Brand Services Limited.*

#### Orange press contacts:

Sandrine Levallois; 06 49 79 60 04; [sandrine.levallois@orange.com](mailto:sandrine.levallois@orange.com)

Valérie Doukhan; 06 85 63 85 26; [valerie.doukhanboudesseul@orange.com](mailto:valerie.doukhanboudesseul@orange.com)

Florentin Soonckindt; 07 85 92 42 77; [florentin.soonckindt@orange.com](mailto:florentin.soonckindt@orange.com)